

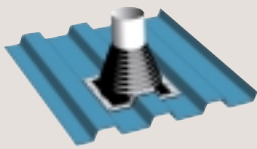


MASTER FLASH®

UNIVERSAL PIPE FLASHING SYSTEM

AN ENGINEERED FLASHING FOR ALL SEASONS AND REASONS

- **ROOF ADAPTABILITY** - Master Flash works on all types of roofing surfaces, including metal, plastic, tile, rubber membrane, and others. Aluminum base bends with ease to conform to any panel configuration or roof pitch.
- **WEATHER PROTECTED** - Master Flash is compounded specifically for maximum resistance to weathering due to ozone and ultraviolet light.
- **EASY ON-SITE CUSTOMIZATION** - Master Flash comes in 11 sizes to fit all pipes and vents 1/8" to 26". Standard colors black and grey.
- **COMPOUND CHOICES** - Standard EPDM covers all applications from - 65F to +275F. Red Silicone Master Flash is available for environmental extremes, from - 100F to +500F.
- **NUMEROUS APPLICATIONS**
- Plumbing, heating/air conditioning vents and equipment
- Electrical service entrance
- Grain augers

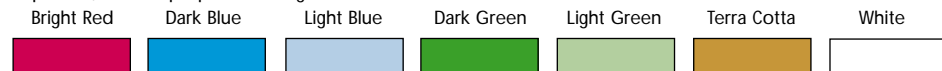


Master flash was used to create a new engineering standard for profile roofing by the International Association of Plumbing and Mechanical Officials (for the Uniform Plumbing Code) and remains the only product so accepted. B VENT APPROVED

COLORED MASTER FLASH®

Same product - Seven new colors to blend with your panels. Seven sizes to accept up to 13" pipe. Standard EPDM only.

Although color stabilizers are milled into the primary raw material, a slight fading can be expected, but the properties and guarantees will not be affected.



Leland Master Flash is IAPMO Approved for use with Type B vent roof penetrations.



MASTER FLASH RETROFIT®

UNIVERSAL PIPE FLASHING SYSTEM

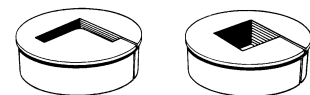
RETROFIT is available in either EPDM or Silicone and can be installed on any existing piping or framing.

3 pipe sizes - 1/2" to 4", 4" to 9-1/4" & 9-1/4" to 16-1/4".

SQUARE TUBING ADAPTERS available to fit - 1/2" to 4" square tube.

ANGLE IRON ADAPTERS available to fit - 1-1/2" TO 4" angles, up to 1/2" thick.

ADAPTERS AVAILABLE



ANGLE IRON & SQUARE TUBING

